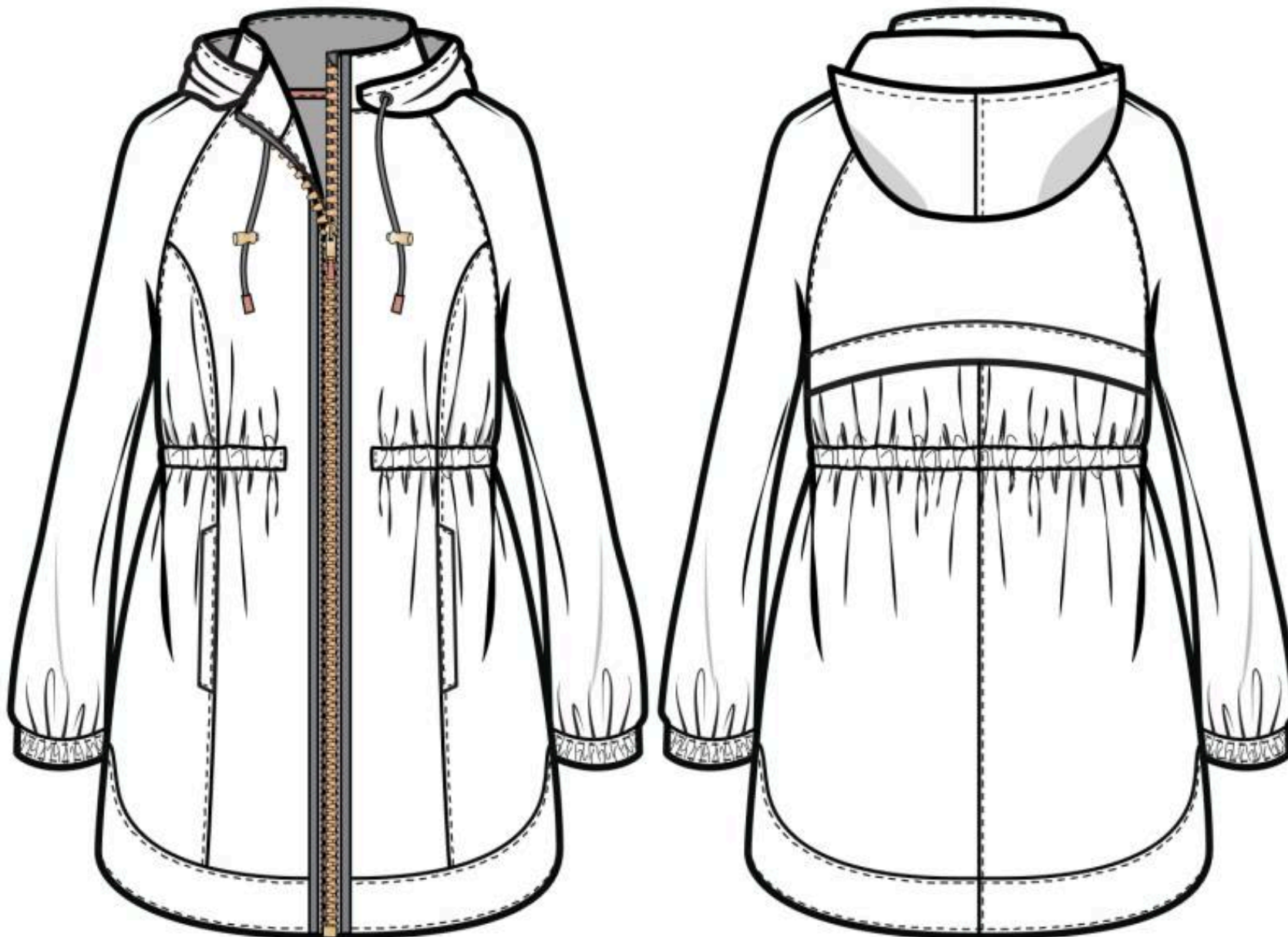




Brand: MAURICES
Department: 201 TOPPERS
Class:
Create Date: 2022-05-18 21:12:47

Buyer: KAYLEE BERGSTROM
Designer: KATRINA HENRY
Tech Designer: KAITLIN JABLONSKI
Modified Date: 2022-10-06 18:40:44

PRODUCT SUMMARY





Brand: MAURICES
Department: 201 TOPPERS
Class:
Create Date: 2022-05-18 21:12:47

Buyer: KAYLEE BERGSTROM
Designer: KATRINA HENRY
Tech Designer: KAITLIN JABLONSKI
Modified Date: 2022-10-06 18:40:44

DESIGN INTENT



BACK NECKLINE CLEAN FINISHED
 W/ 3/8" SELF INTERIOR
 BINDING + 1/8" DNITS



INSPIRATION IMAGE

ZIPPER CHIN GUARD @
 CF TOP ZIPPER OPENING
 W/ THIN 2 PLY INTERNAL
 PLACKET W/ SNES

ADJUSTABLE HOOD
 GROMMET + DRAWCORD +
 SLIDE ADJUSTER + AGLET

FUNCTIONAL
 INTERNAL WAIST SEAM
 ELASTIC DRAWCORD
 + STOPPER

FRONT FEMININE
 PRINCESS SEAMS
 W/ SNES

RAGLAN SLEEVE W/
 SHOULDER SEAM DART
 + SNES TO BODY

BACK YOKE W/ FLAP
 W/ SNES

CB SEAM W/ SNES.

2 PLY SELF SLEEVE
 CUFF W/ ENCASED ELASTIC +
 SHIRRING ABOVE SEAM

FRONT WELT POCKETS
 IN SEAM W/ SNES
 INSIDE POCKET BAG FINISHED
 W/ OVERLOCK FINISH
 NO BIAS BINDING

CF TWILL GROSGRAIN
 TAPE DETAILING W/ SNES

FEMININE CURVED HEM W/
 2PLY SELF W/ SNES

CF COIL ZIPPER CLOSURE
 W/ FEMININE COLOR THREAD DETAILING
 + METAL ZIPPER PULLER + TWILL TAB

INTERNAL WAIST SEAM
 TUNNEL + DRAWCORD



DATE : 06/15/22
 STYLE #: 2019903 REF STYLE #:

FABRICATION:
 KNIT **WOVEN** KNIT AND WOVEN

FIT TYPES:
 FITTED SLIGHTLY FITTED **RELAXED** OVERSIZED
 BOYFRIEND

BODY LENGTH:
 ABOVE WAIST AT WAIST HIGH HIP **LOW HIP**
 MID THIGH ABOVE KNEE AT KNEE MID CALF

BODY SILHOUETTE:
 STRAIGHT A-LINE **SHAPED @ WAIST**
 BABY DOLL FIT & FLARE

NECK STYLE:
 CREW V-NECK Y-NECK SPLIT HIGH-NECK
 BALLET BOAT TURTLE MOCK
 SWEETHEART FUNNEL SCOOP
 COWL HENLEY OFF SHOULDER **OPEN**

FRONT CLOSURE:
 BUTTON KEYHOLE **ZIP** SNAP PULLOVER NONE

SLEEVE LENGTH:
 SLEEVELESS CAP SHORT ELBOW
 3/4 BRACELET **LONG** BELL **RAGLAN**
 DOLMAN DROPSHOULDER SET IN SLEEVE

BRA COVERAGE: **YES** NO

HEMLINE:
 STRAIGHT **SHIRTAIL** HIGHLOW SHARKBITE
 ASYMETRICAL WRAP TWIST/TIE BLOUSANT

DESIGN INTENT UPLOADED
 6.17

UPDATED 8.18



Brand: MAURICES
Department: 201 TOPPERS
Class:
Create Date: 2022-05-18 21:12:47

Buyer: KAYLEE BERGSTROM
Designer: KATRINA HENRY
Tech Designer: KAITLIN JABLONSKI
Modified Date: 2022-10-06 18:40:44

DESIGN INTENT



INSPIRATION SAMPLE -
WILL SEND SAMPLE FOR
CONSTRUCTION REFERENCE



Brand: MAURICES
Department: 201 TOPPERS
Class:
Create Date: 2022-05-18 21:12:47

Buyer: KAYLEE BERGSTROM
Designer: KATRINA HENRY
Tech Designer: KAITLIN JABLONSKI
Modified Date: 2022-10-06 18:40:44

DESIGN INTENT



FEMININE COLOR ZIPPER
DETAILING - ANTIQUE COPPER
COIL ZIPPER TEETH WITH PINK
(SAHARA SAND) THREAD - AS
PER AR SAMPLE

METAL HARDWARE MUST
MATCH BACK TO ZIPPER
COLOR = ANTIQUE COPPER



Brand: MAURICES
Department: 201 TOPPERS
Class:
Create Date: 2022-05-18 21:12:47

Buyer: KAYLEE BERGSTROM
Designer: KATRINA HENRY
Tech Designer: KAITLIN JABLONSKI
Modified Date: 2022-10-06 18:40:44

DESIGN INTENT



METAL HARDWARE MUST MATCH BACK TO ZIPPER COLOR = ANTIQUE COPPER.

WRONG COLOR ON AR SAMPLE GROMMETS - DRAWCORD ADJUSTER - ZIPPER PULL - ZIPPER STOPPER END.

PLEASE RE-SUBMIT NEW TRIM COLOR TO REVIEW.



Brand: MAURICES
Department: 201 TOPPERS
Class:
Create Date: 2022-05-18 21:12:47

Buyer: KAYLEE BERGSTROM
Designer: KATRINA HENRY
Tech Designer: KAITLIN JABLONSKI
Modified Date: 2022-10-06 18:40:44

DESIGN INTENT

Size 5 & 7 *

Auto-Lock



M56ID211
N56ID211
D56ID211

Metal
Poly Coil
Delrin®

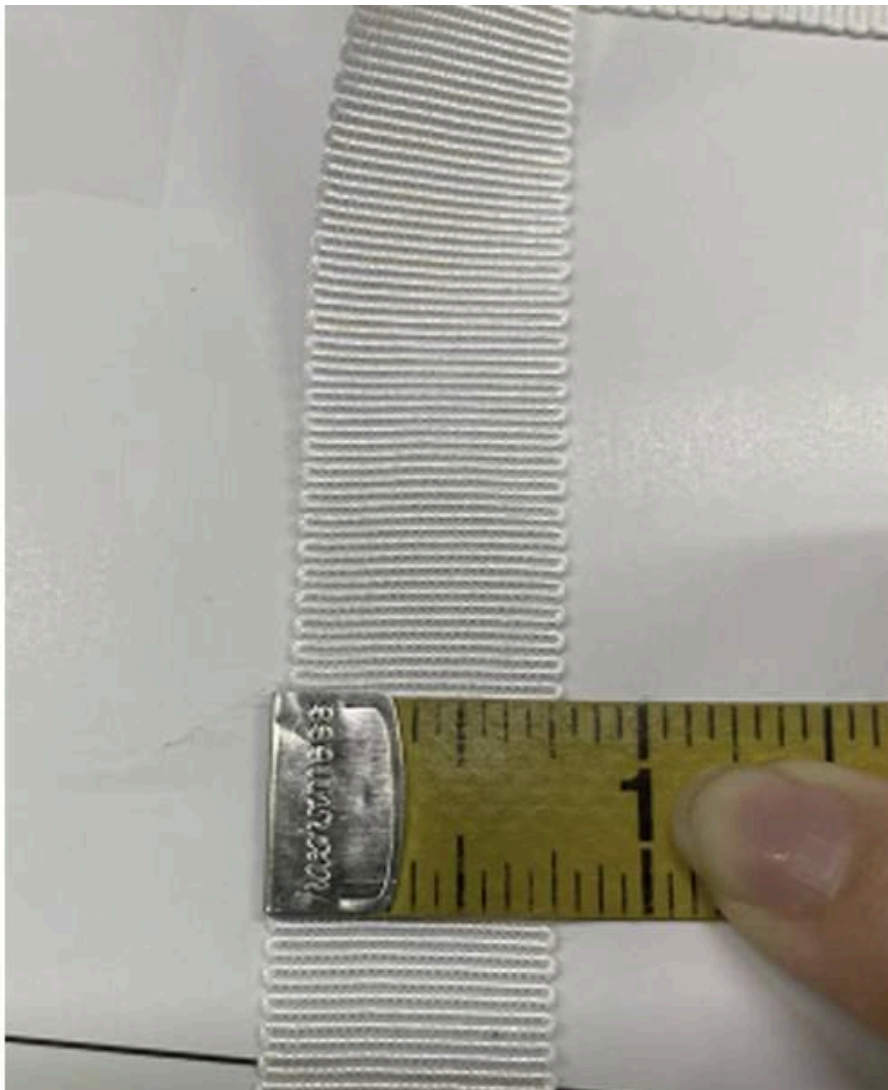
LANDED ZIPPER PULLER
QUALITY FOR CF ZIPPER #5



Brand: MAURICES
Department: 201 TOPPERS
Class:
Create Date: 2022-05-18 21:12:47

Buyer: KAYLEE BERGSTROM
Designer: KATRINA HENRY
Tech Designer: KAITLIN JABLONSKI
Modified Date: 2022-10-06 18:40:44

DESIGN INTENT



LANDED TWILL GROSGRAIN
TAPE QUALITY @ CF ZIPPER +
BACK NECKLINE TAPE + ZIPPER
PULLER TAPE



Brand: MAURICES
Department: 201 TOPPERS
Class:
Create Date: 2022-05-18 21:12:47

Buyer: KAYLEE BERGSTROM
Designer: KATRINA HENRY
Tech Designer: KAITLIN JABLONSKI
Modified Date: 2022-10-06 18:40:44

DESIGN INTENT



ZIPPER CHIN GUARD
CONSTRUCTION REFERENCE



Brand: MAURICES
Department: 201 TOPPERS
Class:
Create Date: 2022-05-18 21:12:47

Buyer: KAYLEE BERGSTROM
Designer: KATRINA HENRY
Tech Designer: KAITLIN JABLONSKI
Modified Date: 2022-10-06 18:40:44

DESIGN INTENT



FEM CURVED HEM
CONSTRUCTION



Brand: MAURICES
Department: 201 TOPPERS
Class:
Create Date: 2022-05-18 21:12:47

Buyer: KAYLEE BERGSTROM
Designer: KATRINA HENRY
Tech Designer: KAITLIN JABLONSKI
Modified Date: 2022-10-06 18:40:44

DESIGN INTENT



ADJUSTABLE INTERNAL WAIST
CINCH DETAILING



Brand: MAURICES
Department: 201 TOPPERS
Class:
Create Date: 2022-05-18 21:12:47

Buyer: KAYLEE BERGSTROM
Designer: KATRINA HENRY
Tech Designer: KAITLIN JABLONSKI
Modified Date: 2022-10-06 18:40:44

BILL OF MATERIALS

FABRIC

| Material No | Material Name | Comments | ACTIVEWEAR BLACK | | GULF STREAM BLUE ATLAS 330-530 | | LAKESIDE OLIVE ATLAS 548-860 | |
|-------------|-----------------|---------------------------------|------------------|--------|--------------------------------|--------|------------------------------|--------|
| 20204 | PU COATING POLY | MAIN BODY QUALITY + P U COATING | ACTIVEWEAR BLACK | SAMPLE | GULF STREAM BLUE ATLAS 330-530 | SAMPLE | LAKESIDE OLIVE ATLAS 548-860 | SAMPLE |

TRIM

| Material No | Material Name | Comments | ACTIVEWEAR BLACK | | GULF STREAM BLUE ATLAS 330-530 | | LAKESIDE OLIVE ATLAS 548-860 | |
|-------------|------------------|---|---|---|---|---|---|---|
| 6018 | THREAD - GENERIC | MAIN BODY THREAD | ACTIVEWEAR BLACK | | GULF STREAM BLUE ATLAS 330-530 | | LAKESIDE OLIVE ATLAS 548-860 | |
| 5969 | ZIPPER - GENERIC | 1 CF NYLON COIL ZIPPER WITH FEMININE POP COLOR THREAD DETAILING (SAHARA SAND) ZIPPER TAPE DTM BODY COLOR ZIPPER SIZE #5 SEE DESIGN INTENT ANTIQUE COPPER ZIPPER PULL W/ FEMININE POP COLOR (SAHARA SAND) TWILL TAPE | ANTIQUE COPPER COIL ZIPPER TEETH WITH SAHARA SAND | ANTIQUE COPPER NYLON COIL ZIPPER TEETH WITH PINK (SAHARA SAND) THREAD ANTIQUE COPPER ZIPPER PULL W/ FEMININE POP COLOR (SAHARA SAND) TWILL TAPE | ANTIQUE COPPER COIL ZIPPER TEETH WITH SAHARA SAND | ANTIQUE COPPER NYLON COIL ZIPPER TEETH WITH PINK (SAHARA SAND) THREAD ANTIQUE COPPER ZIPPER PULL W/ FEMININE POP COLOR (SAHARA SAND) TWILL TAPE | ANTIQUE COPPER COIL ZIPPER TEETH WITH SAHARA SAND | ANTIQUE COPPER NYLON COIL ZIPPER TEETH WITH PINK (SAHARA SAND) THREAD ANTIQUE COPPER ZIPPER PULL W/ FEMININE POP COLOR (SAHARA SAND) TWILL TAPE |
| 6023 | TRIM - GENERIC | ZIPPER CHIN GUARD DETAILING - SELF FABRIC | ACTIVEWEAR BLACK | | WASHED NAVY ATLAS 431-910 | | LAKESIDE OLIVE ATLAS 548-860 | |
| 6019 | TAPE - GENERIC | GROSGRAIN TWILL TAPE @ CF ZIPPER OPENING TWILL TAPE WIDTH: 1/2" | ACTIVEWEAR BLACK | | WASHED NAVY ATLAS 431-910 | | LAKESIDE OLIVE ATLAS 548-860 | |
| 6019 | TAPE - GENERIC | ZIPPER PULLER + BACK NECKLINE DETAILING TWILL TAPE | SAHARA SAND ATLAS 109-220 | | SAHARA SAND ATLAS 109-220 | | SAHARA SAND ATLAS 109-220 | |



Brand: MAURICES
Department: 201 TOPPERS
Class:
Create Date: 2022-05-18 21:12:47

Buyer: KAYLEE BERGSTROM
Designer: KATRINA HENRY
Tech Designer: KAITLIN JABLONSKI
Modified Date: 2022-10-06 18:40:44

BILL OF MATERIALS

TRIM

| Material No | Material Name | Comments | ACTIVEWEAR BLACK | GULF STREAM BLUE ATLAS 330-530 | LAKESIDE OLIVE ATLAS 548-860 | |
|-------------|-------------------|--|-------------------|--|------------------------------|--|
| 6023 | TRIM - GENERIC | DRAWCORD ROPE W/ METAL AGLET + METAL ADJUSTER + METAL GROMMETS @ HOOD DRAWCORD ROPE = 1/4" METAL AGLET = 2X ADJUSTER = 2X GROMMET = 2X | SEE DESIGN INTENT | DRAWCORD ROPE = BLACK METAL AGLET = SAHARA SAND ADJUSTER = ANTIQUE COPPER GROMMET = ANTIQUE COPPER | SEE DESIGN INTENT | DRAWCORD ROPE = WASHED NAVY METAL AGLET = SAHARA SAND ADJUSTER = ANTIQUE COPPER GROMMET = ANTIQUE COPPER |
| 6128 | ELASTIC - GENERIC | ADJUSTABLE INTERIOR ELASTIC CORD WAIST CINCH AND PLASTIC SLIDE ADJUSTER CORD = ELASTIC ADJUSTER = PLASTIC SEE DESIGN INTENT DTM BODY | ACTIVEWEAR BLACK | GULF STREAM BLUE ATLAS 330-530 | LAKESIDE OLIVE ATLAS 548-860 | |
| 6023 | TRIM - GENERIC | SLEEVE CUFF HEM ENCASED ELASTIC 3/4" WIDTH | BLACK | BLACK | BLACK | |